

12_26 D&C Manager Sidewalk Pay Items

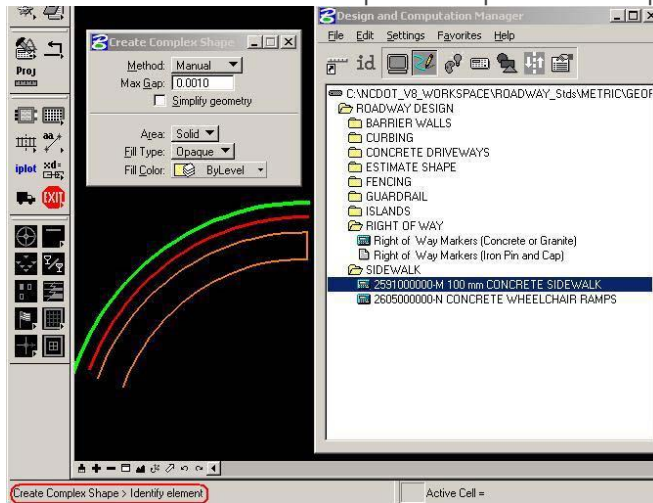
Question:

I could not get the sidewalk in my design file to compute.

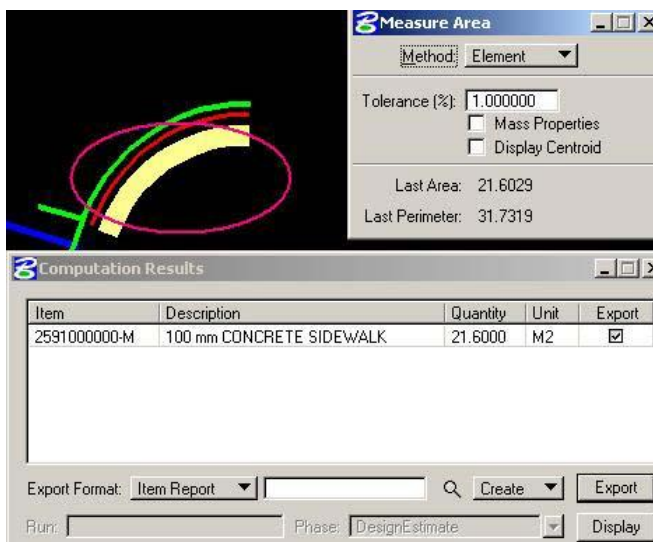
Answer:

It is paid for per Square Yard (Square Meter) Unit quantity.

After the sidewalk has been designed and drafted into the DSN file, the D&C Manager anticipates the creation of the of sidewalk shape to compute an area quantity.



With 'Place Influence' set to 'ON', create the shape by tagging the lateral elements of the sidewalk boundary. The radial sidewalk elements (shorter ends) do not have to close in order create shapes (compared to Microstation 'Create Region' command).



Note that the sidewalk shapes created are used and referenced again in the Design Scripts. Sidewalk shapes will plot out lightly shaded in regular plan production.